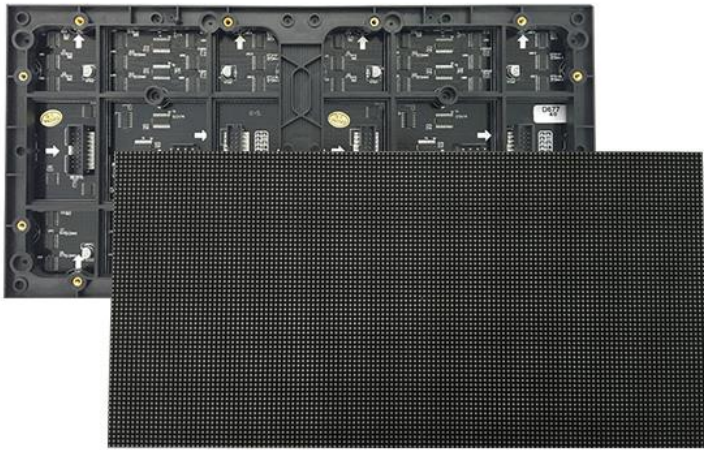


BIG Indoor

Fixed Indoor LED Panel

P2.5, P3, P4, P5, P10

- Standard 320x160mm module
- Can be paired with panel cabinet
- Strong Construction
- Anti-Scratch
- Modular Installation
- Ultra Lightweight Material
- High Precision
- Energy Saving



Light



Precise



Cool



Anti-EMI



Seamless



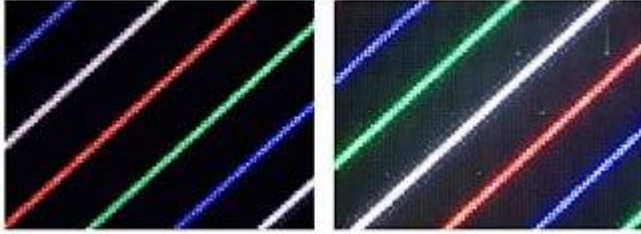
Easy Service



Tool-less



Feature

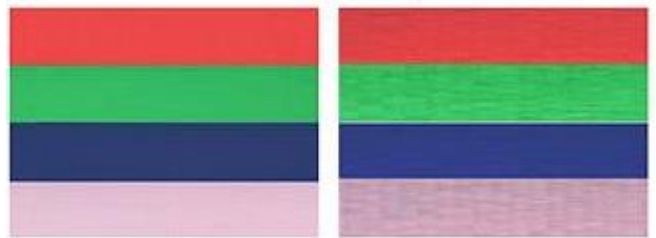


BIG Indoor Series

Others

Our BIG Indoor series LED module employs ghosting eliminating IC chips so that each and every pixels like up as it should.

Very tight binning of LED lamps from renowned chip manufacturer such as Nationstar/Kinglight ensures high uniformity of display colours.



BIG Indoor Series

Others



BIG Indoor Series

Others

By using high greyscale driving IC, we can ensure all colour tones are display correctly without ugly banding effects.

Our product line-up now uses high refresh rate driving ICs, which can drive the LED screen at high frequency, ensuring flicker-free viewing experience.



BIG Indoor Series

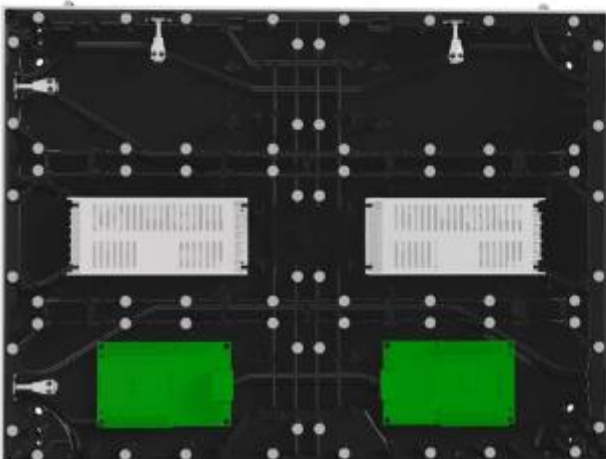
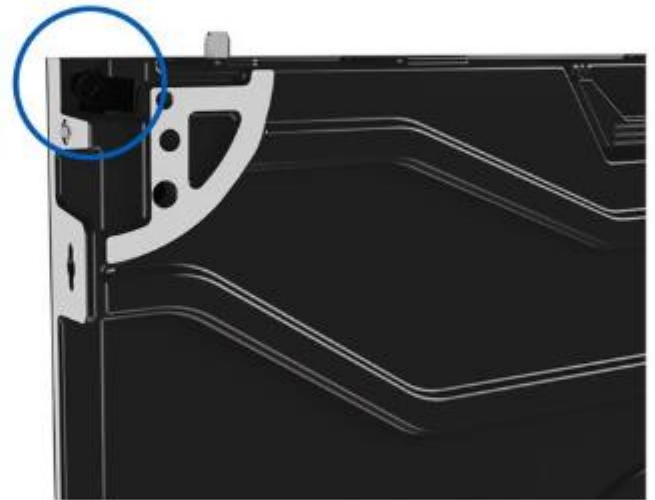
Others

Cabinet



Ultra lightweight magnesium alloy material. 40% lighter compared to conventional steel panel.

High precision die-cast with CNC cutting technology for seamless and precise panel assembly on-site



Fully front accessible internal components for power supply, controller card, and cables with strong magnetic attachment blocks on LED module.



Black LED Lamp

We select LED lamp with matte encapsulation and even light spectrum emitting technologies from Nationstar, the leading lamp manufacturer in Asia which has **superior image contrast** and **glare free** viewing experience.

This means the black is darker and white is brighter, while ensuring comfortable viewing experience.

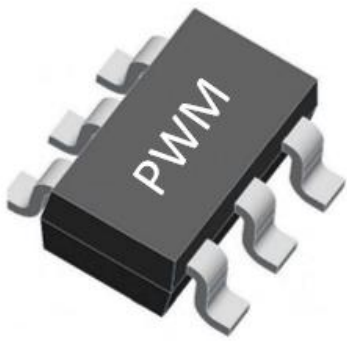


Black LED Lamp



Normal LED Lamp

Features



High Refresh Rate Driving IC

We also utilize LED Driving IC with real PWM (pulse-width modulation) technique which supports high refresh rate.

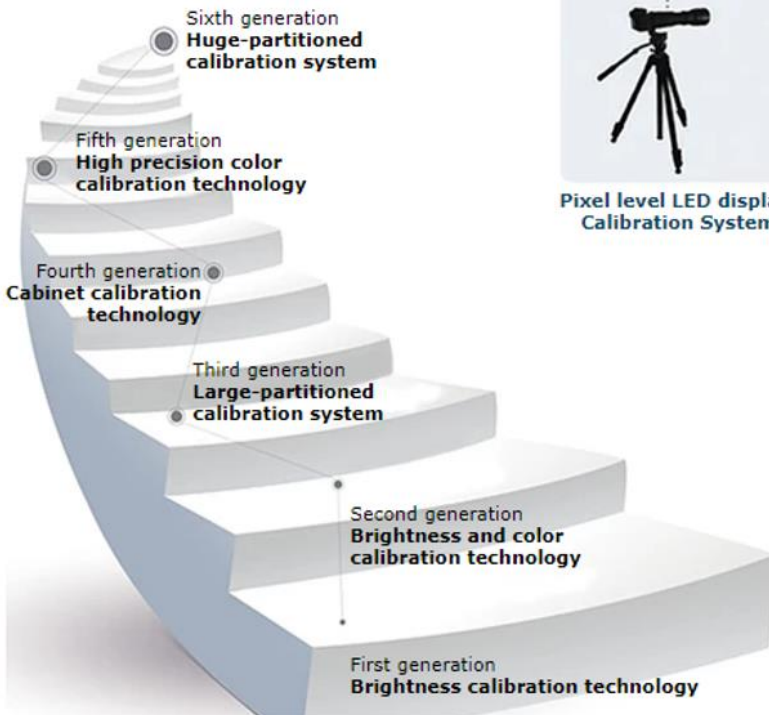
This reduces flicker that is commonly associate with common LED display panel. Therefore, we guarantee flicker free viewing experience.



High Refresh Rate Driving IC



Normal Driving IC



Pixel Level Calibration

We offer solution to perform high precision Pixel level LED display calibration.

With the latest sixth generation calibration system, it can calibrate up to 200,000 pixels in one go, which is a vast improvement from 24,576 pixels since its introduction in 2009.

Features

Applications



Transportation Hubs
Shopping Malls - Hanging



Exhibition Halls - Wall Mounting



Conference Rooms
Lecture Halls
Command Centers - Wall Mounting



Corporate Meeting Rooms - Stacking

BIG INDOOR SPECIFICATIONS

Model	P2.5	P3	P4	P5	P10
LED Type	SMD2121 3-in-1 LED Lamp with Dark Matte Encapsulation				
LED Brand	Nationstar / Kinglight				
Module Size	320 (W) x 160mm (H) x 15mm (D)				
Brightness	1,500 ~ 1,800 nits				
Colour Depth	12-16 bit (281 trillion colors)				
Refresh Rate	1,920 - 3,840 Hz				
Viewing Angle	160° / 160° (V/H)				
Color Temp	2,500° - 16,000° K (adjustable)				
Module Resolution	128 x 64	104 x 52	80 x 40	64 x 32	32 x 16
Panel Size	640 (W) x 480 (H) x 85mm (D)				
Panel Resolution	320 x 192	204 x 156	160 x 120	128 x 96	64 x 48
Panel Weight	4.3KG (Panel only) / 7.85KG (with LED Modules & System)				
Power	450W/m2 (Max) / 150W/m2 (Avg)				
Calibration	Supported (Full depth, LED to LED, pixel level)				

Technology Partner:



BIG Indoor LED Display
by AV Quest (M) Sdn Bhd